



Hot Air



Infra Red  
(Optional)

## Electric powerful Dryers with forced hot air



## Features

### “Griff” is the tunnel dryer with the highest air circulation of its kind.

- It is designed to dry and cure fabrics printed with digital printers using water-based inks.
- The hot air circulation is particularly accurate and use reversed blades fans, with high efficiency and low noise.
- The air exchange is calibrated to expel water vapor and combustion fumes and facilitate drying.
- The outflow nozzles send the air onto the product in a perpendicular and high speed way.
- The temperature is regulated by a precision thermostat that drives the modulating heating resistances.
- The structure is heavily insulated to minimize heat dissipation and power consumption.
- The passage height is 130 mm, sufficient for the vast majority of products.
- The two independent belt speeds version can dry simultaneously two products with different drying time.
- It is possible to lift the upper section electronically to easily perform the internal cleaning of the dryer.

## Optionals

- Inlet and outlet extensions
- Outlet cooling hood
- IR heating with flash lamps in the first meter of the heating chamber



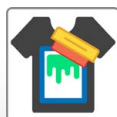
Hot Air



Infra Red  
(Optional)

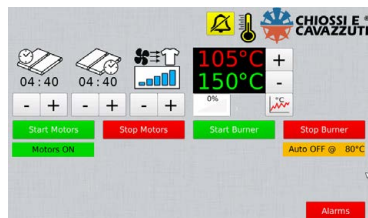


DTG  
Printing



Screen  
Printing

Main Application: Textile DTG and Screen Printing - Mass production



Griff PLC interface

## New Configurations

Tunnel Length: 4, 6 or 8 meters

Belt width: 1400, 1750 or 2x850 mm



Infrared Lamps and upper section opening

## Advantages

- new interactive digital interface
- optional combined drying system
- highest speed of hot air circulation
- powerful airflow specifically for Water-based
- precise time and temperature control
- low consumption and efficient system
- optional flash infrared lamps



double belt configuration



Exhaust fumes and outlet cooling hood



Other models and configurations are available

TECHNICAL DATA	GRIFF ELECTRIC 4140	GRIFF ELECTRIC 4180	GRIFF ELECTRIC 6180	GRIFF ELECTRIC 8180
Electrical Requirements	400V 3P+N+PE 58 A	400V 3P+N+PE 90 A	400V 3P+N+PE 110 A	400V 3P+N+PE 126 A
Exhaust Specification	1500 m <sup>3</sup> /h Ø 200 mm	1500 m <sup>3</sup> /h Ø 200 mm	1500 m <sup>3</sup> /h Ø 200 mm	1500 m <sup>3</sup> /h Ø 300 mm
Max Temperature	200°C	200°C	200°C	200°C
Power Consumption (max)	38 kw	58 kw	76 kw	84 kw
Belt Width [mm]	1440	1750 or 2x850	1750 or 2x850	1750 or 2x850
Tunnel Length [mm]	4000	4000	6000	8000
Production <sup>1,2</sup> (light-dark)	600 pieces/h	800 pieces/h	1000 pieces/h	1200 pieces/h
Dimension (LxWxH)[mm]	6980x2150x2100	6980x2475x2100	8980x2475x2100	10980x2475x2100
Shipping Weight	1800 kg	2000 kg	3000 kg	4000 kg

<sup>1,2</sup> Production of T-shirts with A4 size print - 3 minutes curing time